



# Cytokeratin 8 (ABT534) Mouse mAb

<b>Catalog No</b>	YP-Ab-15216
<b>Isotype</b>	IgG
<b>Reactivity</b>	Human;Mouse;Rat
<b>Applications</b>	IHC;WB;
<b>Gene Name</b>	KRT8 CYK8
<b>Protein Name</b>	CARD2;CK 8;CK-8;CK8;CYK8;CYKER;Cytokeratin endo A;Cytokeratin-8;DreK8;EndoA;K2C8;K2C8_HUMAN;K8;Keratin 8;Keratin type II cytoskeletal 8;Keratin, type II cytoskeletal 8;Keratin-8;KO;Krt 2.8;KRT8;MGC118
<b>Immunogen</b>	Synthesized peptide derived from human Cytokeratin 8
<b>Specificity</b>	The antibody can specifically recognize human CK8 protein, and shows no cross reaction with CK1, 4, 5, 6, 7, 10, 15, 16, 17, 18, 20.
<b>Formulation</b>	PBS, pH7.2, 0.03% Porcolin 300, containing stabilizing protein
<b>Source</b>	Monoclonal Mouse IgG2b, Kappa
<b>Purification</b>	The antibody was affinity-purified from mouse ascites by affinity-chromatography using specific immunogen.
<b>Dilution</b>	IHC-p 1:200-400, WB 1:200-1000,
<b>Concentration</b>	1 mg/ml
<b>Purity</b>	≥90%
<b>Storage Stability</b>	-20°C/1 year
<b>Synonyms</b>	CARD2;CK 8;CK-8;CK8;CYK8;CYKER;Cytokeratin endo A;Cytokeratin-8;DreK8;EndoA;K2C8;K2C8_HUMAN;K8;Keratin 8;Keratin type II cytoskeletal 8;Keratin, type II cytoskeletal 8;Keratin-8;KO;Krt 2.8;KRT8;MGC118110;MGC174782;MGC53564;MGC85764;sb:cb186;Type-II keratin Kb8
<b>Observed Band</b>	
<b>Cell Pathway</b>	Cytoplasmic, Membranous
<b>Tissue Specificity</b>	Liver/ Tonsil
<b>Function</b>	disease:Defects in KRT8 are a cause of cryptogenic cirrhosis [MIM:215600].,function:Together with KRT19, helps to link the contractile apparatus to dystrophin at the costameres of striated muscle.,miscellaneous:There are two types of cytoskeletal and microfibrillar keratin: I (acidic; 40-55 kDa) and II (neutral to basic; 56-70 kDa).,PTM:O-glycosylated at multiple sites; glycans consist of single N-acetylglucosamine residues.,PTM:Phosphorylation on serine residues is enhanced during EGF stimulation and mitosis. Ser-74 phosphorylation plays an important role in keratin filament reorganization.,similarity:Belongs to the



intermediate filament family.,subunit:Heterotetramer of two type I and two type II keratins. keratin-8 associates with keratin-18. Associates with KRT20. Interacts with HCV core protein and PNN. When associated with KRT19, interacts with DMD. Interacts with TCHP.,tissue spec

**Background**

keratin 8(KRT8) Homo sapiens This gene is a member of the type II keratin family clustered on the long arm of chromosome 12. Type I and type II keratins heteropolymerize to form intermediate-sized filaments in the cytoplasm of epithelial cells. The product of this gene typically dimerizes with keratin 18 to form an intermediate filament in simple single-layered epithelial cells. This protein plays a role in maintaining cellular structural integrity and also functions in signal transduction and cellular differentiation. Mutations in this gene cause cryptogenic cirrhosis. Alternatively spliced transcript variants have been found for this gene. [provided by RefSeq, Jan 2012],

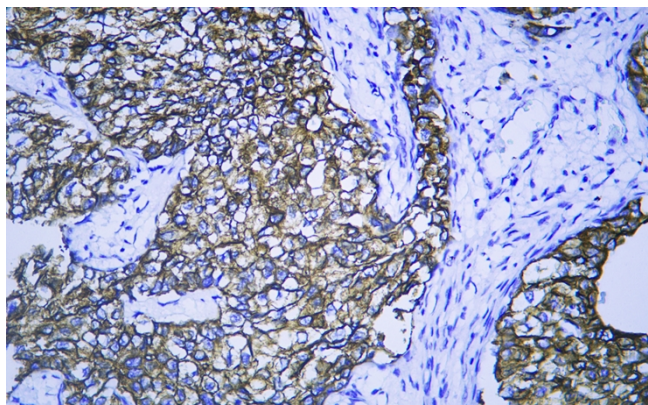
**matters needing attention**

Avoid repeated freezing and thawing!

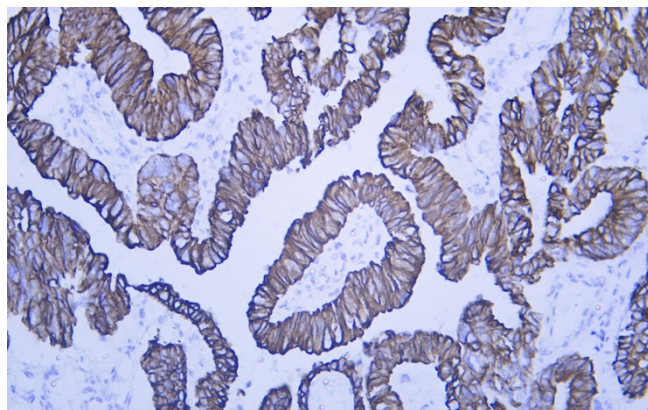
**Usage suggestions**

This product can be used in immunological reaction related experiments. For more information, please consult technical personnel.

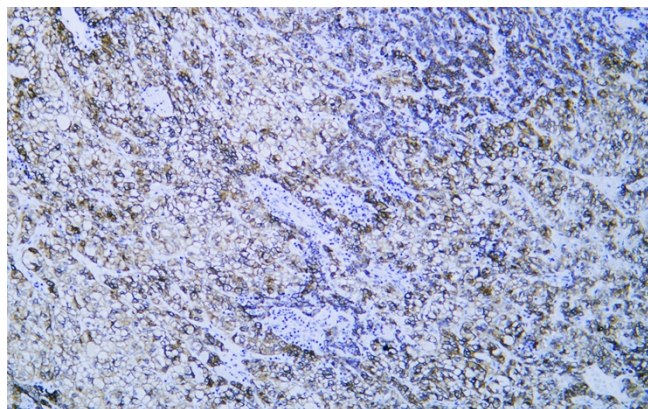
## Products Images



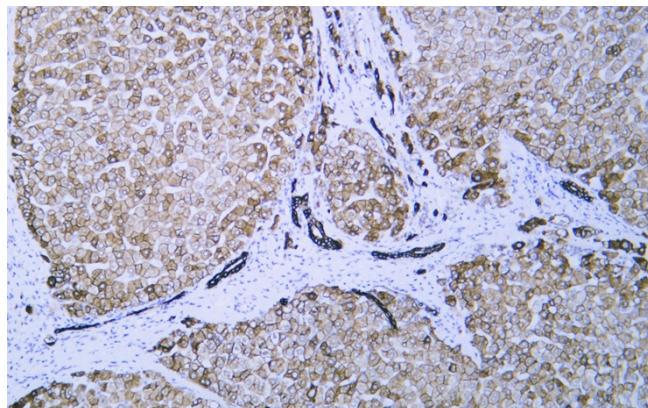
Human Breast Cancer tissue was stained with Anti-Cytokeratin 8 (ABT534) Antibody



Human colon carcinoma tissue was stained with Anti-Cytokeratin 8 (ABT534) Antibody

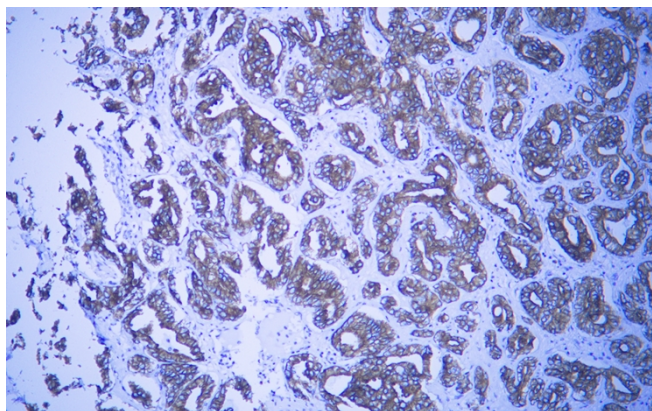


Human hepatocellular carcinoma tissue was stained with Anti-Cytokeratin 8 (ABT534) Antibody



Human liver tissue was stained with Anti-Cytokeratin 8 (ABT534) Antibody





Human prostatic cancer tissue was stained with Anti-Cytokeratin 8 (ABT534) Antibody